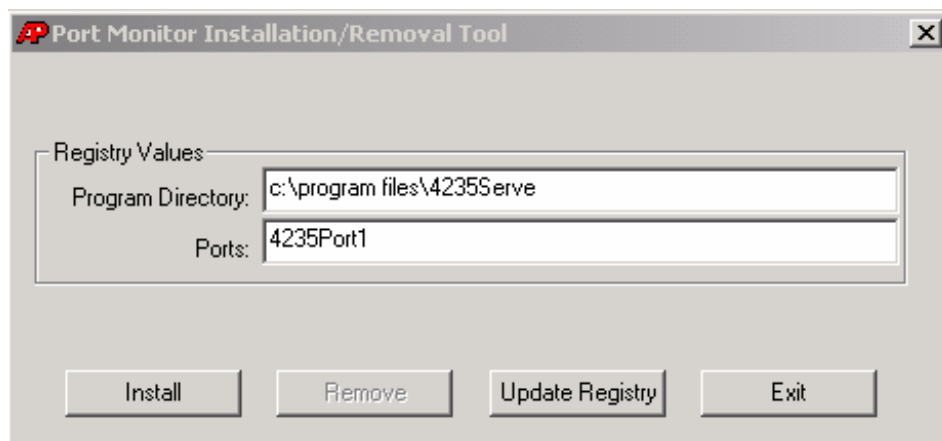




Changing the Input Printer Destination

The easiest way to do this is during installation when on the Install Printer panel you can specify something other than c:\program files\product name. But if you didn't happen to do this you can change it using the following steps.

- 1) Bring up the input printer program from Start\Programs\<Product name\Support\Input Printer and you should see the following panel:



- 2) Make sure that the port is not selected by any printers and click the remove button. If it is still assigned to a printer you will receive an error message.
- 3) Type in the new location that you want it to go to in the Program Directory window and click the install button.
- 4) Click on the Update Registry button just to make sure that all the correct changes have been made.
- 5) Reboot your PC.