



LicenseWatch Installation

Setup Guide

Contents

Welcome.....	3
System requirements	4
Server operating system.....	4
Typical setup	5
Starting installation.....	5
Microsoft Data Access Components	5
Microsoft .Net Framework v1.1	6
Use existing Microsoft SQL Server with LicenseWatch.....	11
Custom setup	13
Installing the SMS Client.....	16
Troubleshooting	17
Support.....	18
Client requirements.....	19

Welcome

This documentation will guide you through the installation of LicenseWatch on your server. The guide both describes how to install a typical and a custom installation.

Furthermore, you can read about how to run the LicenseWatch Client on your client computers.



System requirements

Before you begin installing LicenseWatch you must check that your server meets these minimum system requirements

Server operating system

The following server operating systems are supported by LicenseWatch Platinum.

- Windows 2003 Server
- Windows 2000 Server

Before installing LicenseWatch you must install IIS (Internet Information Services) on the server. IIS is installed as a standard component on Windows 2000 Server, but on Windows 2003 Server you must manually specify to install IIS and ASP.NET.

On Windows 2003 Server IIS and ASP.NET can be installed by following these operations:

- In the control panel run "Add or Remove Programs".
- Click "Add/Remove Windows Components".
- Select (but DON'T check) "Application Server".
- Click "Details..."
- Check "ASP.NET". This automatically checks several other components.
- Click "OK"
- Click "Next" to begin installation. You may be prompted to insert your Windows installation CD.

Typical setup

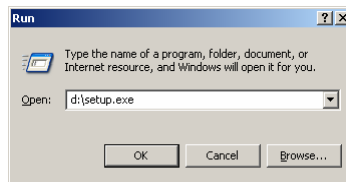
A “typical setup” installs all of the LicenseWatch components on your server. The main consideration which you have to make before installing LicenseWatch is whether to install a small scale database called Microsoft SQL Server Desktop Engine (MSDE) or use an existing Microsoft SQL Server 2000 on your network.

A typical setup includes the following components:

- Installation of Microsoft SQL Server Desktop Engine (MSDE) or using an existing Microsoft SQL Server 2000 for the LicenseWatch database.
- Installation of two virtual directories in IIS (one used for LicenseWatch Administration and one for communicating with LicenseWatch clients).
- Copy LicenseWatch files to the folder LicenseWatchPlatinum under your servers program folder.
- Installation of two services (LW Client Package Handler and LW Workstation Timeout Handler).

Starting installation

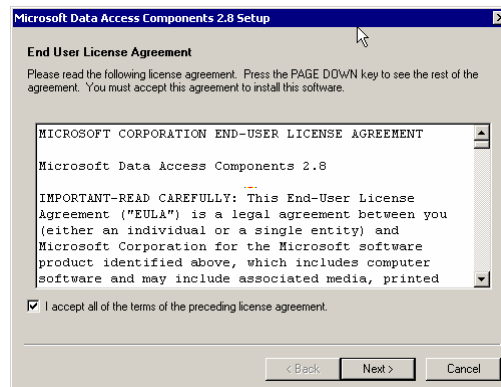
1. Insert your LicenseWatch CD in your computer
2. Run “setup.exe” from the CD:



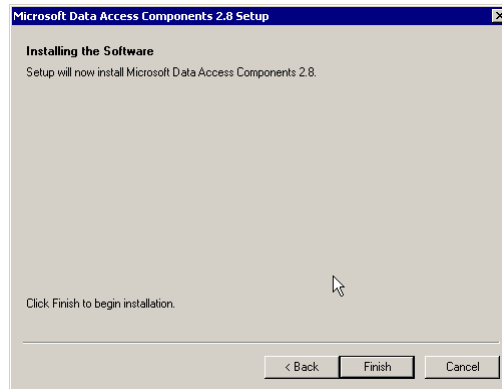
3. The setup program will detect if you already have Microsoft Data Access Components (MDAC) installed on your computer. If not, the setup program will automatically launch a separate MDAC setup program.

Microsoft Data Access Components

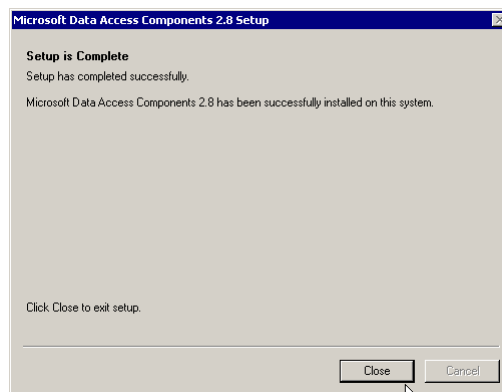
- a) Check “I accept all of the terms of the preceding...”



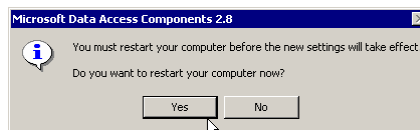
- b) Click “Next”



c) Click "Next"



d) Click "Close"

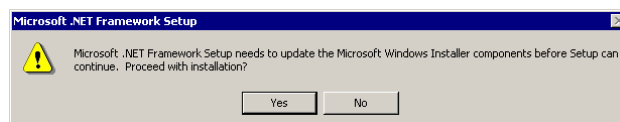


e) Click "Yes" to reboot your computer (it is very important that you do this before continuing the setup program.)

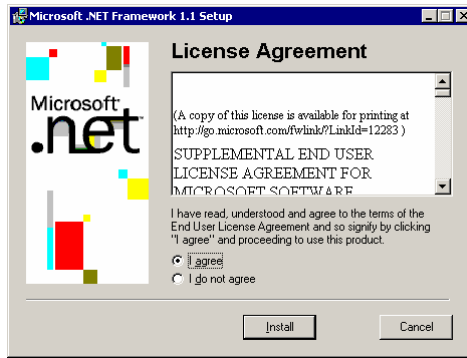
4. After rebooting, the LicenseWatch installation should automatically continue. If you already had MDAC installed on your computer the setup will continue and check if your computer has Microsoft .NET Framework v1.1 installed. If not, the setup program will launch a separate Microsoft .NET Framework setup program on your computer.

Microsoft .Net Framework v1.1

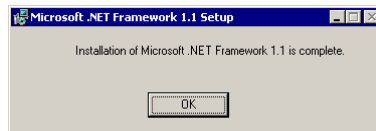
a. If your computer does not have the latest Microsoft Installer components, the following dialog will show and you need to click "Yes" to continue.



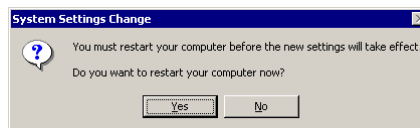
b. Select "I agree" and click "Install"



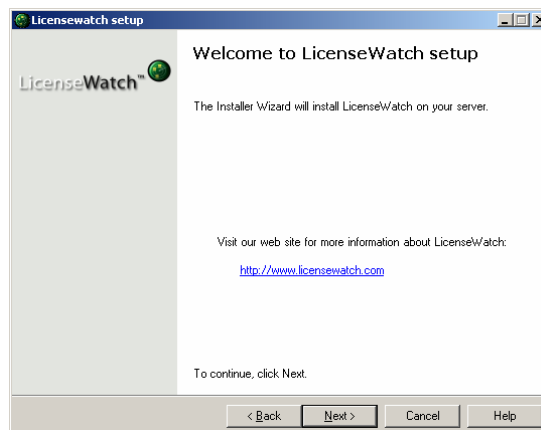
c. Click “OK”



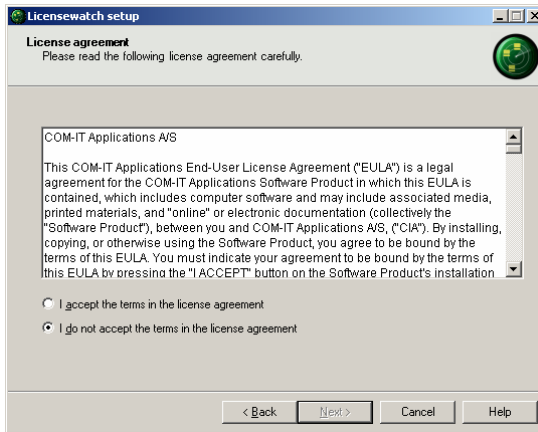
d. Click “Yes” to restart the computer (again it is important that you follow this instruction)



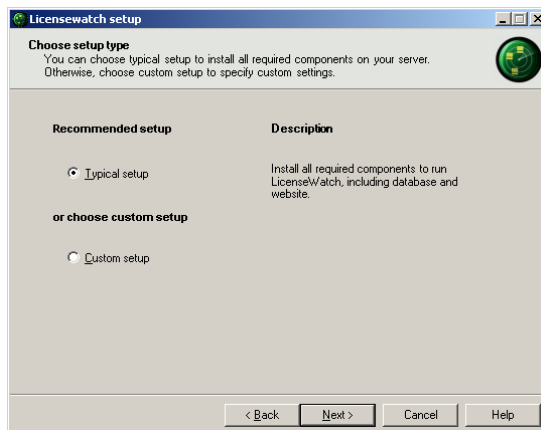
5. After the installation of MDAC and Microsoft .NET Framework you are ready to begin installing LicenseWatch components.
6. The LicenseWatch installation will automatically be launched. If LicenseWatch Installation doesn't automatically start after rebooting, please relaunch LicenseWatch installation from the CD, e.g. D:\SETUP.EXE



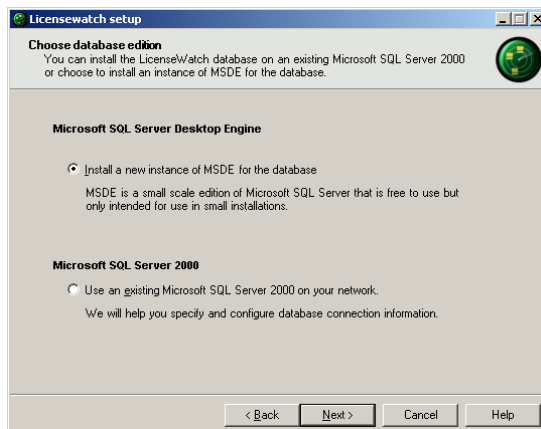
7. Click “Next”



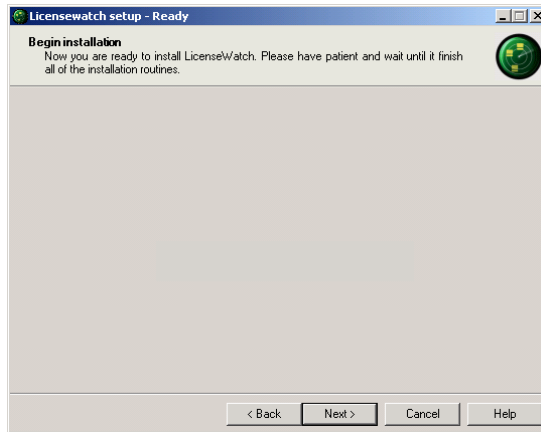
8. Select “I accept...” and Click “Next”



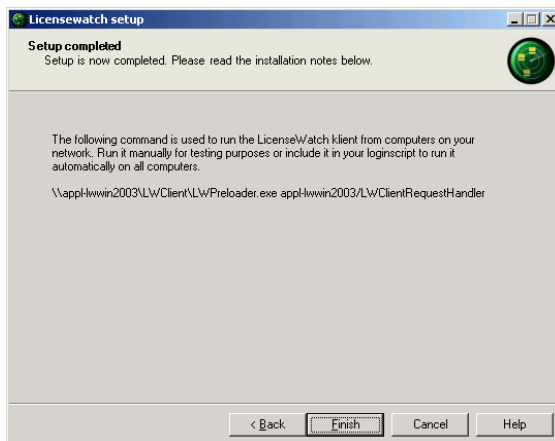
9. Now select “Typical install” and click “Next”



10. Select “Install a new instance of MSDE for the database” and click “Next” – if you want to read about how you can use an existing Microsoft SQL server 2000 together with LicenseWatch see section *Use existing Microsoft SQL Server with LicenseWatch*.



11. Click "Next" to begin the installation of LicenseWatch.
12. The installation will take a few minutes to complete. MSDE will be installed and a LicenseWatch database will be created. Next, the LicenseWatch websites will be created in IIS and two Windows services will be created and started.
13. After the installation is completed, you will see a dialog like the following.

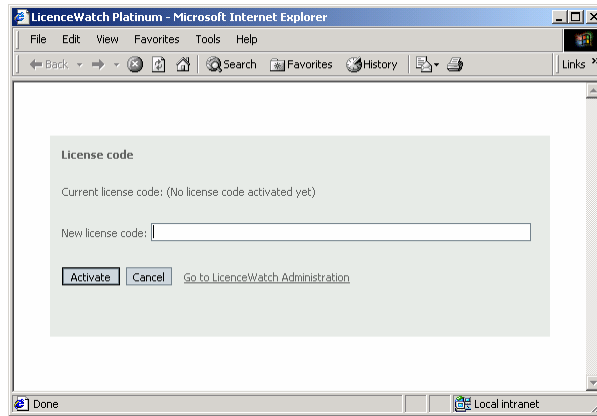


The command shown above is only an example. Use the command shown by LicenseWatch Installation instead. If you lost the command, use the command shown above and replace appl-lwwin2003 with your servername.

Important!!!

You must copy and paste the above command into your login script to enable LicenseWatch on your client computers. When LicenseWatch client is enabled via your login script it will run each time a client computer is logging on to your network.

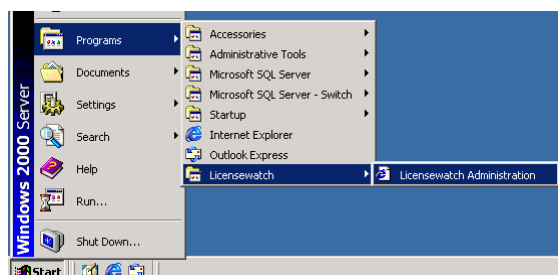
14. You will also notice that LicenseWatch installation has launched a new browser connected to the LicenseWatch website. Before you can use LicenseWatch, you must enter your license code.



15. After you have entered a valid license code, the system will register the license code and the system is now ready for use.



16. You can now click “Finish” in the LicenseWatch installation and continue to use LicenseWatch via your web browser. You will find a shortcut to the LicenseWatch Administration website in your Start menu.



Use existing Microsoft SQL Server with LicenseWatch

If you already have an existing Microsoft SQL Server on your network and you want to use that for the LicenseWatch database, LicenseWatch Installation will help you to do this.

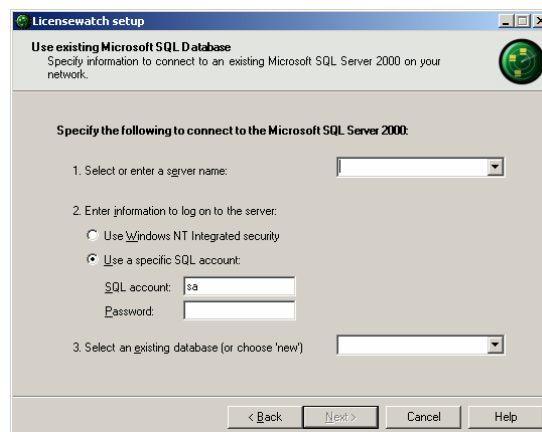
Note: If you choose to use LicenseWatch together with an existing Microsoft SQL Server 2000, you must check that the SQL Server runs at least Microsoft SQL Server Service Pack 2. You can download the latest Service Pack for SQL Server 2000 from: <http://www.microsoft.com>.

Important!!!

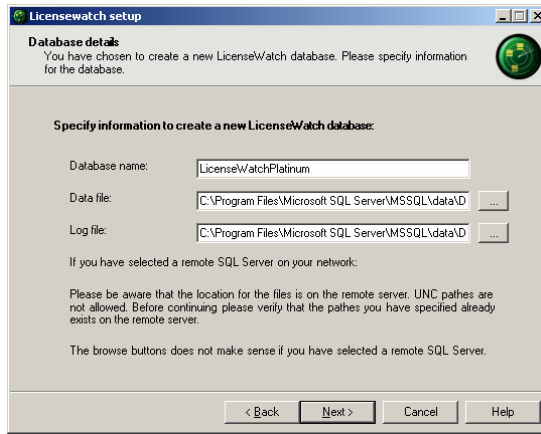
You cannot use LicenseWatch with earlier versions of Microsoft SQL Server.

You must complete all the steps regarding installation of MDAC and Microsoft .NET Framework before continuing in this section.

1. After you have selected “Microsoft SQL Server 2000” on the page “Choose database edition”, you will see the following dialog:



2. First, you must enter the name of your existing Microsoft SQL Server 2000., or you can select a existing servers if you expand the dropdown box.
3. Next you have to choose which type of security to use when connecting to the Microsoft SQL Server. It is highly recommended to use a specific SQL account. Use the sa account or some other administrator account. Only use Windows NT Integrated Security if this is your only option, since this setting can cause troubles in some installations.
4. Finally, you must choose “(new)” in the list of databases in order to install LicenseWatch in a new database. If you already have created a database for LicenseWatch, you can select that instead.
5. Click “Next” to continue. If you selected to create a new database, the following dialog appears. In this dialog name the database to create. Be aware, that the pathes for the data and log file is on the SQL Server. If you have specified a remote SQL Server, it does not make sence to use the browse buttons, since they browse on the local machine. UNC pathes are NOT allowed.

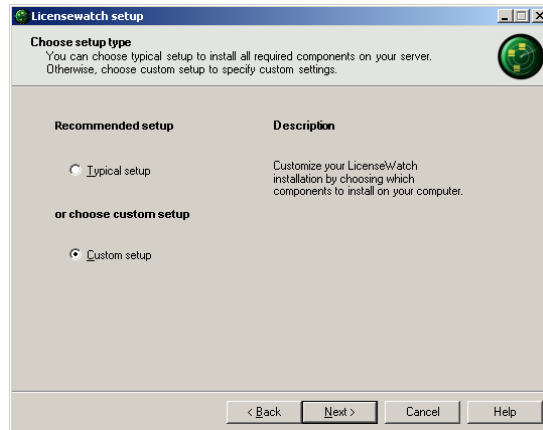


6. Now you can continue running the setup program as normal.

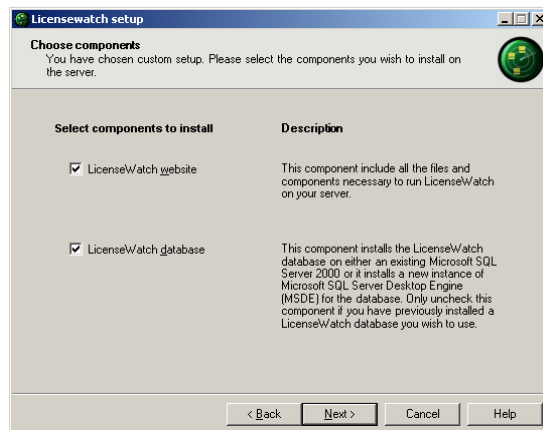
Custom setup

If you want to select which components to install during the setup and also wants to specify more details about how to install each component, you can select custom install. Only use this setup type if you are an experienced system administrator.

1. Select “Custom install” when you see the following dialog during the installation:

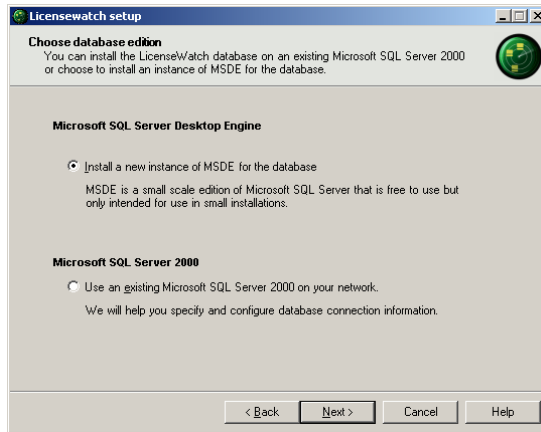


2. Next select the components you want to install.



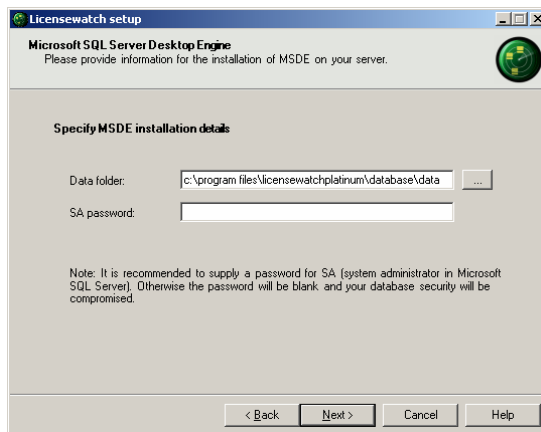
3. If you do not choose “LicenseWatch database”, the following dialogs specifying the database settings is skipped.

Now you must choose which type of database edition you want to use for LicenseWatch.

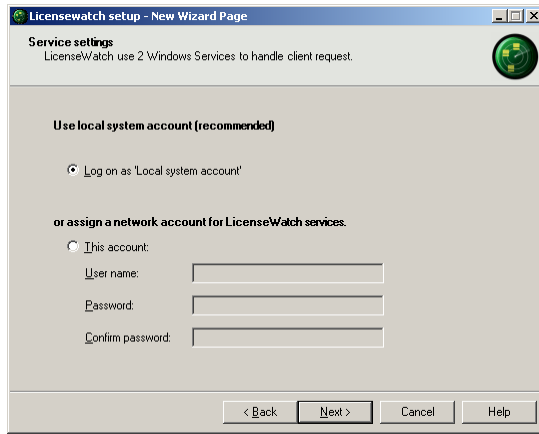


4. If you selected “Microsoft SQL Server Desktop Engine”, the following dialog appears. Otherwise skip this step.

You can specify the data folder for MSDE. This is where the database is placed. You can also provide a SA password for the MSDE installation.



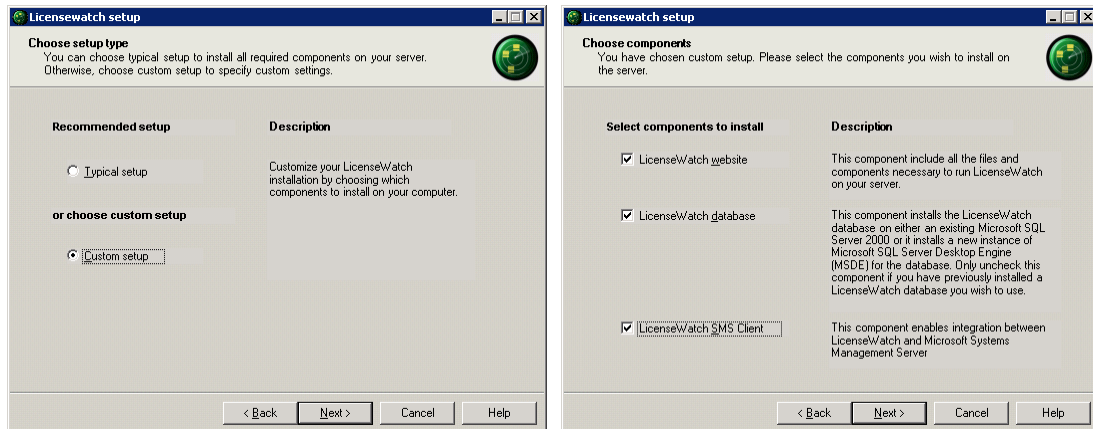
5. If you selected “Microsoft SQL Server 2000, follow these instructions [Use_Licensewatch_together_with_an_existing_Microsoft_SQL_Server](#). Otherwise skip this step.
6. If you selected to install the “LicenseWatch Website” component, LicenseWatch will install two Windows services on your computer as part of the installation. You can choose to run these services under a specific NT account or you can use default setting (local system account). You can always change this information using Services in the Control Panel or Administrative Tools on your server.



7. Click "Next" to continue then installation as usual.

Installing the SMS Client

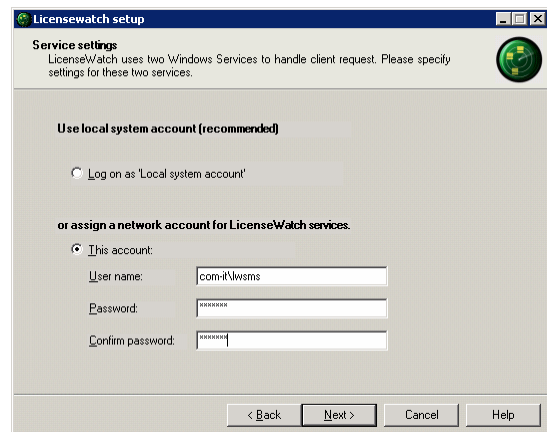
When installing the SMS client you must choose Custom Installation and check SMS client.



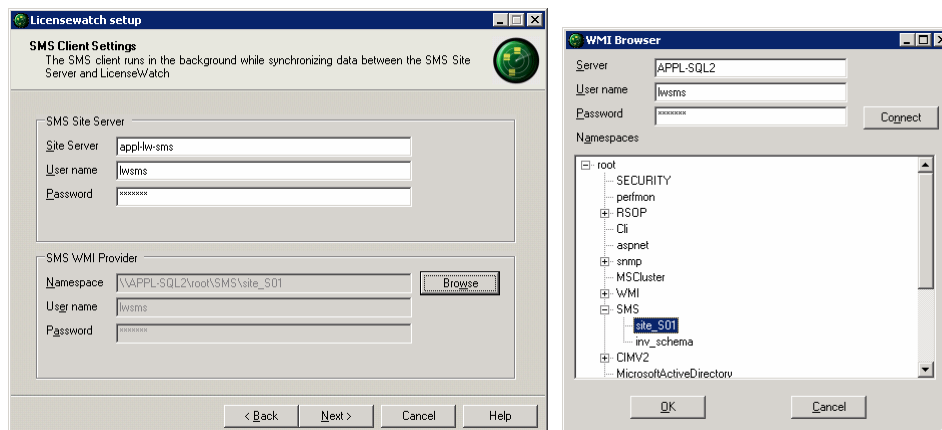
If the SMS database is placed on a different machine than LicenseWatch, then you must use a domain account for logging on to the SMS Client Service.

In SMS Client Settings you must specify connection information for the *SMS Site Server* and the *SMS WMI Provider*.

The SMS Client connects to the *SMS Site Server* to set inventoried file properties and metering rules. *Site Server* is the name of the server where the SMS Site is installed. *User name* and *Password* must be that of a domain user with administrator privileges for that server.

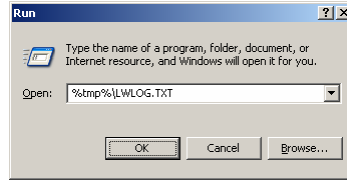


The SMS Client connects to the *SMS WMI Provider* to get collected information about software, hardware, files and meter data. Click *Browse* to set connection information. In the *WMI Browser* dialog, enter the name of the server where the SMS database is installed, this may be different from that of the SMS site server. Enter the user name and password of a domain user with administrator privileges to that server. Then click *Connect*. Select the namespace of the relevant SMS site and click *OK*.

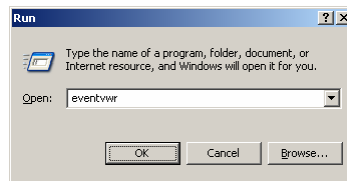


Troubleshooting

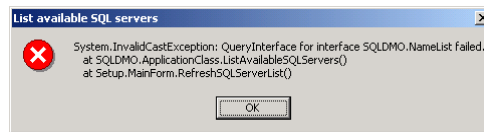
- A. If you should experience any problems during the setup, you can read about any error messages during installation in a log file. To open this file, you can run the following command:



- B. You can also read about any installation issues in the event viewer on your computer – run this command to launch the event viewer:



- C. If you use an existing Microsoft SQL Server and do not have at least Service Pack 2 on the Microsoft SQL Server and choose to expand the server dropdown list, you will receive the following error. This means that you must install the latest SQL Server Service Pack.



Support

You can find the latest support information on <http://www.licensewatch.com>.

Client requirements

In order to run the LicenseWatch client on Windows 95/98 computers, you must check the following system requirements in order to properly run LicenseWatch:

Windows 95

- Internet Explorer 4.0
- DCOM 95
- WMI (Only for scanning hardware)
- Winsock2 update

Windows 98

- Internet Explorer 4.0
- WMI (Only for scanning hardware)

These Microsoft updates (except Internet Explorer 4.0) are included on your LicenseWatch CD under: *|bin|ExtraUtil*